



The Royal Society of Medicine

History of Medicine Society

The emergence of medicine and health care
up to the present-day

This new lecture series is a fantastic opportunity to appreciate the historical development of various specialties. It will be of interest to all medical and healthcare professionals as well as students, and hopefully will encourage participants to go on to further study medical history in more detail.

Book now:

www.rsm.ac.uk/sections/history-of-medicine-society






History, art and medicine:

Module 1 - part 1

This session will demonstrate the continued relevance of medical history and the significant role played by art in interpreting the history of medicine.


 **Wed 6 Oct 2021**
5:00pm to 6:55pm BST

[Book now ►](#)

The emergence of surgery:

Module 1 - part 2

Join us to identify the influence of significant developments in surgery and the extent to which it has led to a need for increased specialisation.


 **Wed 3 Nov 2021**
5:00pm to 6:55pm GMT

[Book now ►](#)

The emergence of medicine:

Module 2 - part 1

Participants will understand how primary care and nursing have emerged and identify the issues that have influenced its present structure.


 **Wed 1 Dec 2021**
5:00pm to 6:55pm GMT

[Book now ►](#)

The emergence of medicine:

Module 2 - part 2

Here we will investigate the emergence of neurology and defining moments in the evolution of cardiology.


 **Wed 12 Jan 2022**
5:00pm to 6:55pm GMT

[Book now ►](#)

Natural sciences in medical practice:

Module 3 - part 1

In this session, discover the extent to which science-based methods have allowed clinicians to improve their understanding of disease as well as allowed the imaging of the human body.


 **Wed 2 Feb 2022**
5:00pm to 6:55pm GMT

[Book now ►](#)

Natural sciences in medical practice:

Module 3 - part 2

Join us to discuss the complex development of anaesthesia and pain relief over time and the application of natural sciences into clinical care.


 **Wed 2 Mar 2022**
5:00pm to 6:55pm GMT

[Book now ►](#)

Patient care from cradle to grave:

Module 4 - part 1

Explore the historical, socio-economic, and cultural influences in developing the speciality of paediatrics as well as in the care of the elderly.


 **Wed 6 Apr 2022**
5:00pm to 6:55pm BST

[Book now ►](#)

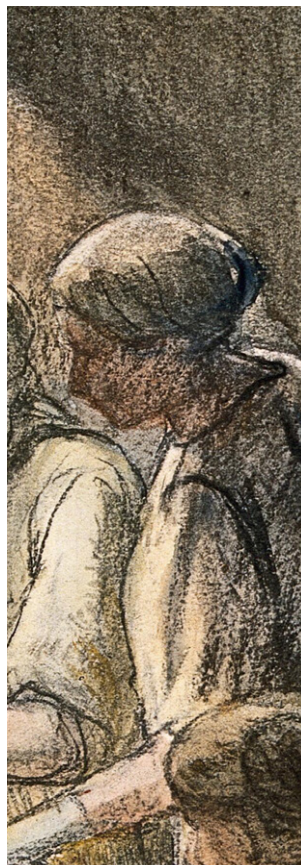
Patient care from cradle to grave:

Module 4 - part 2

The final session will help identify the factors which led to the development of public health and the types of issues that prevent global health from being fully achieved in the modern age.

 **Wed 4 May 2022**
5:00pm to 6:55pm BST

[Book now ►](#)



Tickets

RSM members

Member	£12
Trainee	£9
Student	£6

Non members

Non member	£20
Trainee/AHP/Nurse/Midwife	£15
Student	£10

Join in the conversation online using **#RSMLive**
Follow us on Twitter: **@RoySocMed**

Book now at www.rsm.ac.uk/sections/history-of-medicine-society



The Royal Society of Medicine



Unparalleled support for your healthcare career.

With in-person and online learning as well as webinar support for over 50 medical specialties, the RSM can help you enhance your career. Why not join today?

Join quoting 'ACD15' and receive 15% off your membership.

Apply online at www.rsm.ac.uk/become-a-member

*New members only. Excludes Student membership.